

Kozmic Motorsports

8967 Gilder Rd., Ste. A
Houston, TX 77064-1286
281-890-4772

Sales@KozmicMotorsports.com



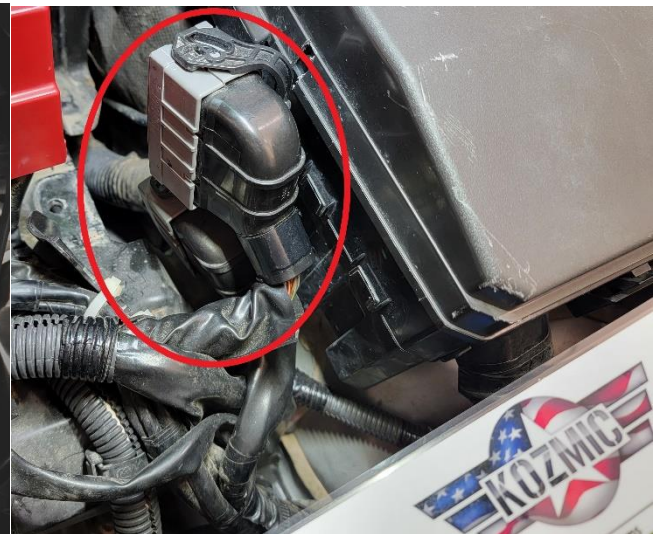
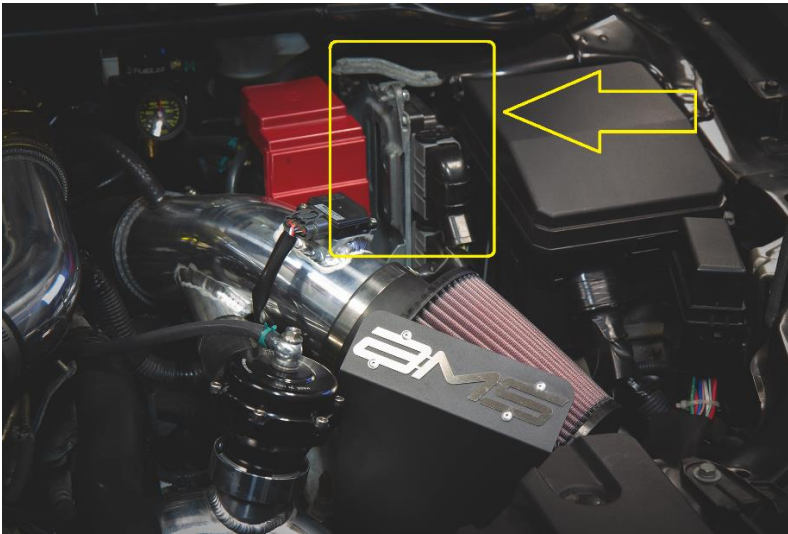
Kozmic Elite 1500 Installation

Revised 1-15-24 v1.2

Torque Specs - M8 Fasteners: 10 ft-lbs M5 Fasteners: 22 in-lbs

Engine Bay Mounted Kit: *Intake clearance restricted*

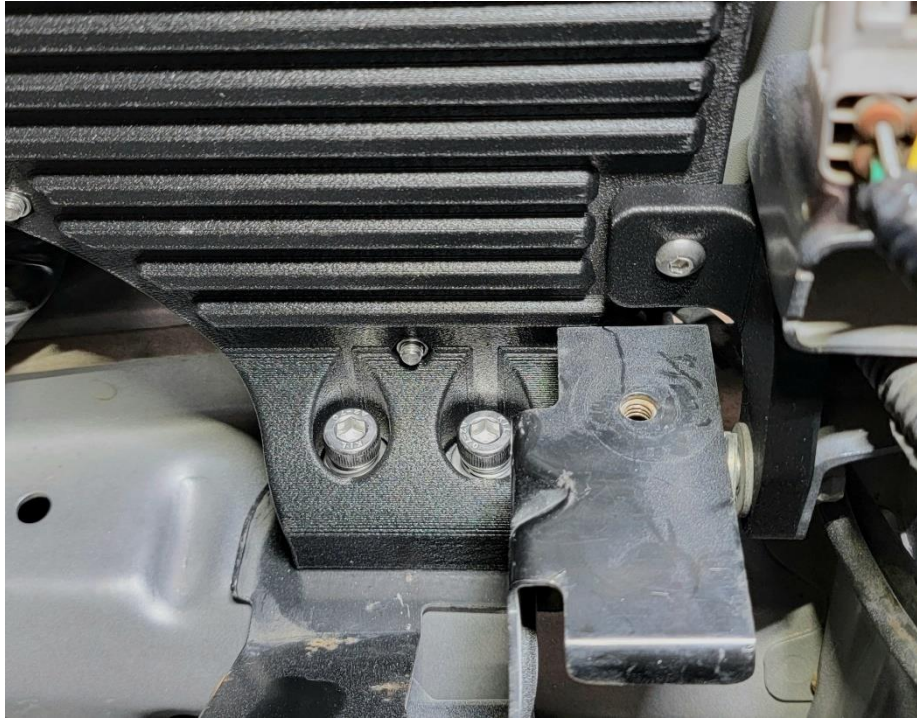
Step 1: Remove Air Intake/Air Box Assembly if needed for ease of access. Unplug both OEM Ecu Connectors and remove OEM ECU with its mounting bracket, set aside.



Step 2: Assemble the ECU to the mounting bracket as shown, torque all hardware to spec above.



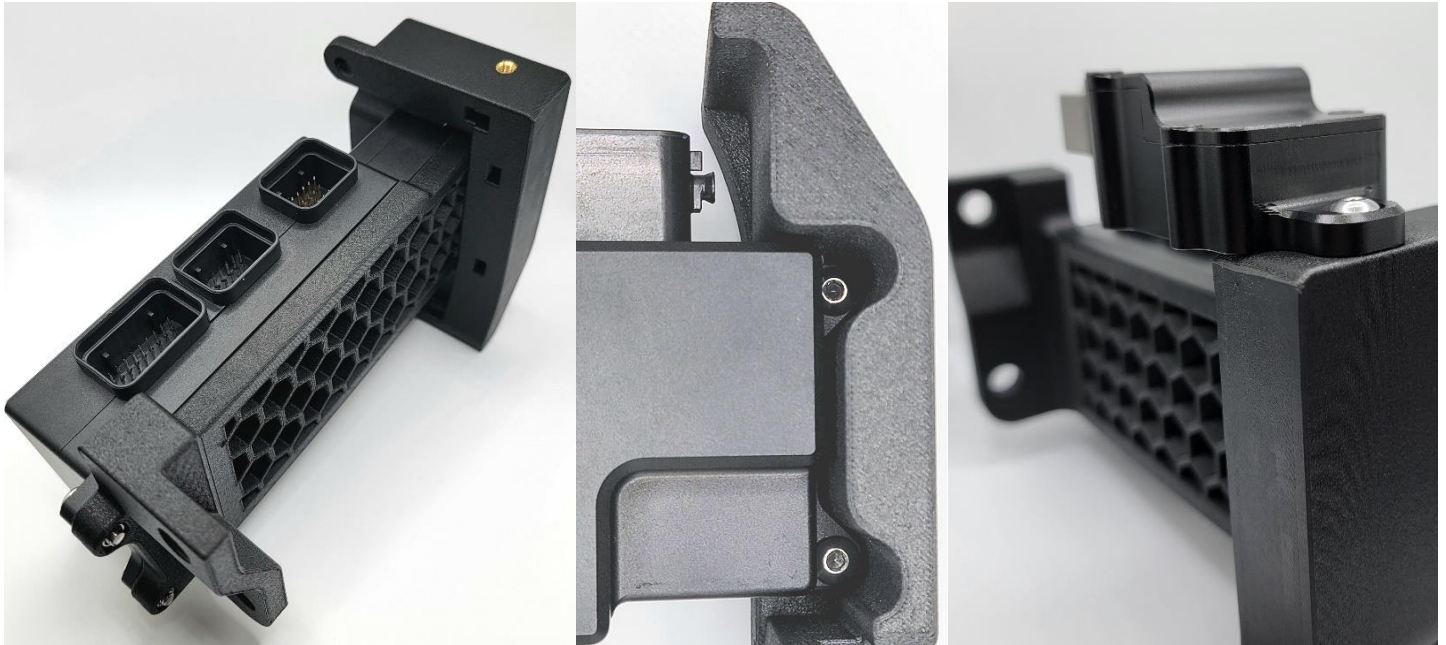
Step 3: Mount the ECU support bracket on the radiator core support as shown. Mount ECU on frame rail using the 2 longer M8 Allen Head bolts with the lock and flat washers on each. Install the M5 bolt for the support bracket into the ecu mount and tighten. If you are using the OEM airbox support bracket it may be tricky to tighten the support bracket, you may desire to mock the mounts in place and tighten the core support bolt without the airbox bracket in place. Tighten all mounting hardware to listed torque spec.



Step 4: Install the supplied silicone vacuum hose onto the onboard MAP sensor of the Elite ECU. Route this hose DOWN next to the ECU and secure with the end of the hose facing DOWN. You can cut this hose down if desired. The ECU uses this sensor for atmospheric pressure calculation when desired so we do not want to cap or plug this source. This hose is just here to keep water and debris from entering the sensor.

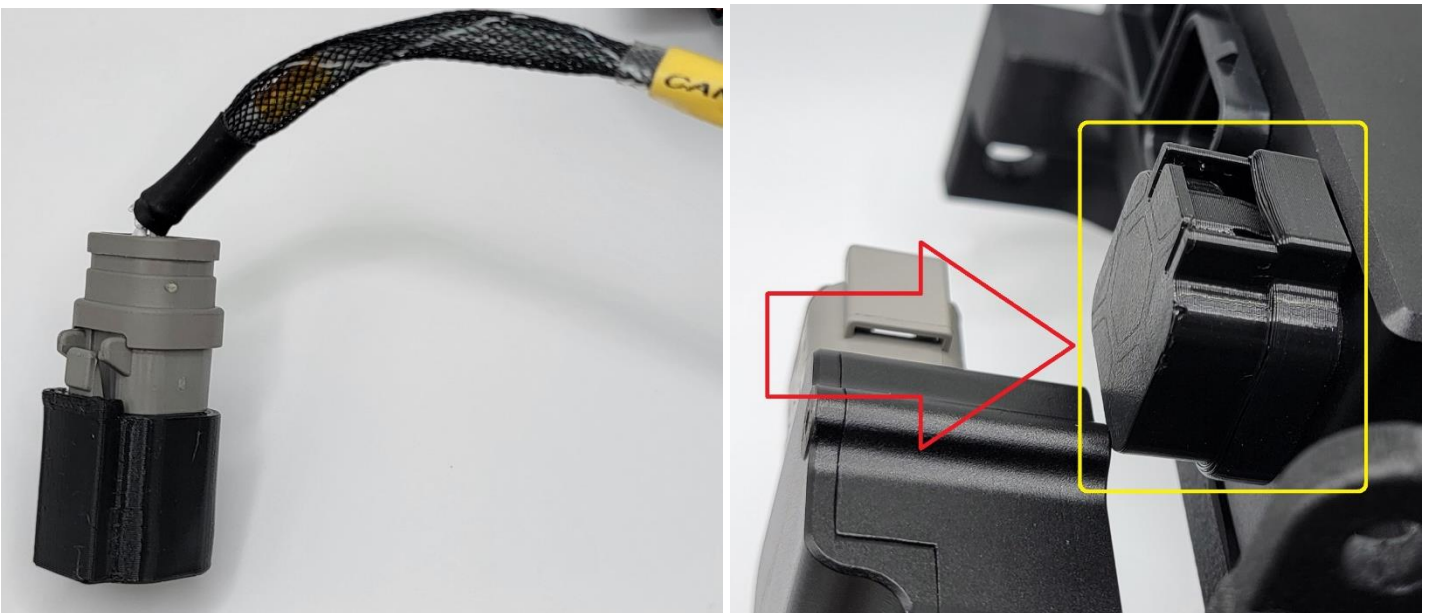


Step 5: Assemble the Patch Adapter as shown below. Install CAN Gateway Module, torque to 6 ft-lbs. Tighten all other hardware to listed torque spec.

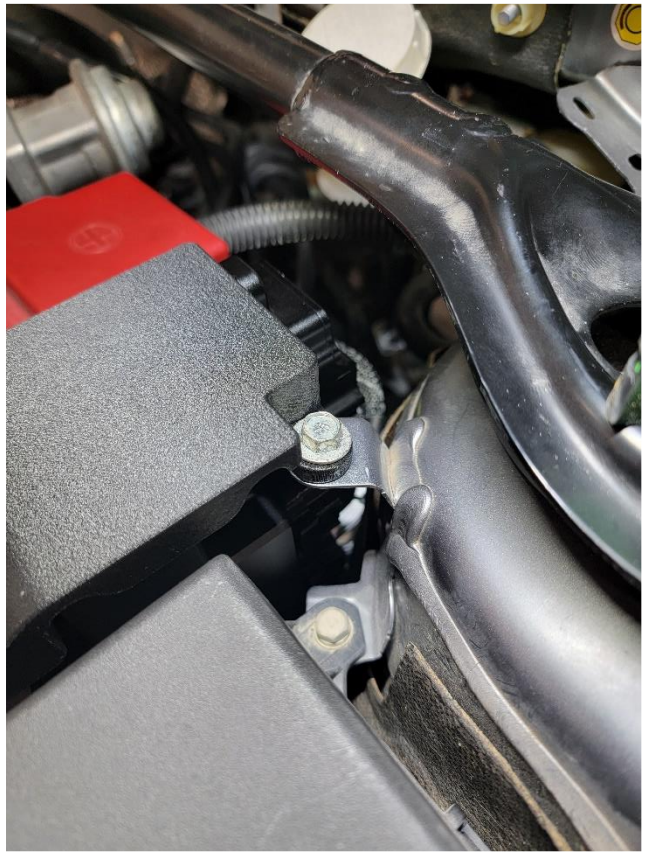
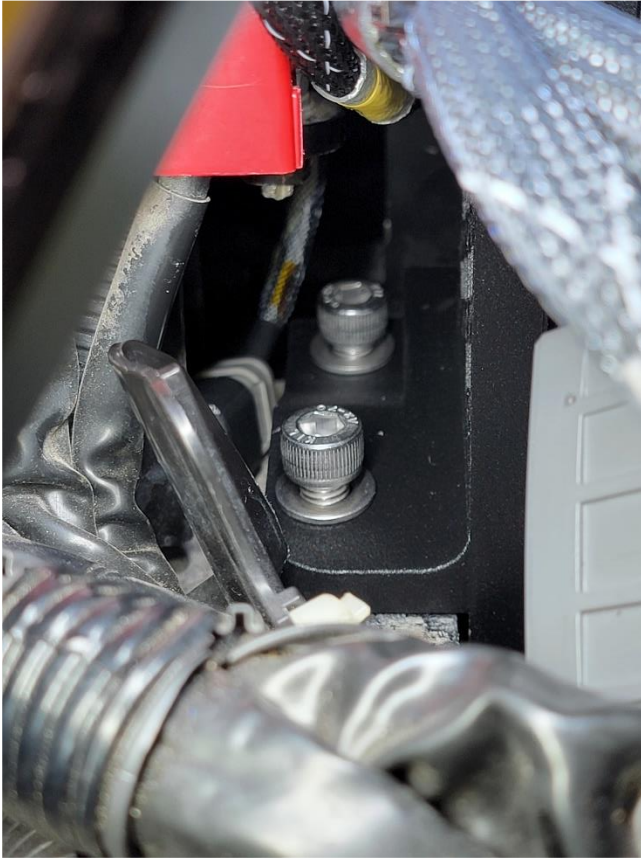


Step 6: *Depending on your ordered setup you may or may not have the below shown connector cap or plug.*
DTM 4 CAP - If you are not using a CAN wideband kit or other Haltech CAN product, install the DTM 4 position cap on the CAN breakout connector in the new ECU harness as shown below.

Expansion AMP 26 PLUG – If you are not using any of the additional auxiliary inputs, install the plug as shown into the expansion plug on the patch adapter. (Top 26 pin port).

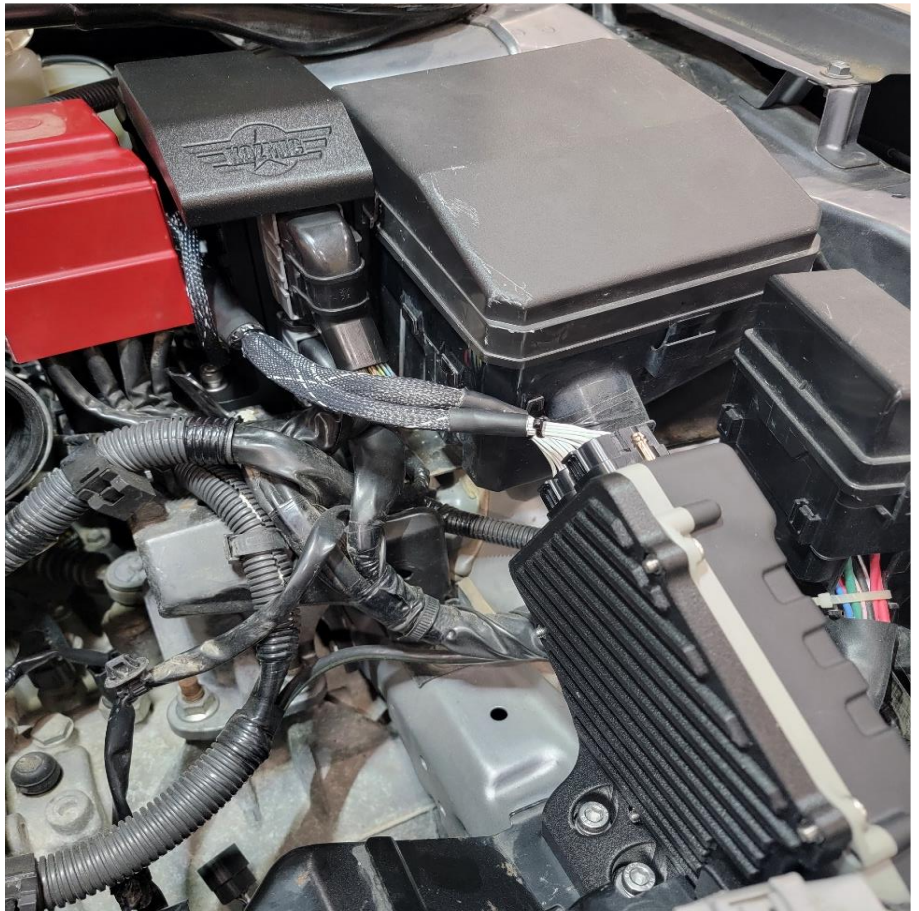


Step 7: Connect the new ECU harness to the patch adapter and plug in the CAN Gateway Module
Connect the OEM ecu connectors to the patch adapter. Loosely install patch adapter in the OEM ECU location using the supplied M8 bolts with lock and flat washers, do not tighten yet. When installing, route the harnesses as shown. Install the M6 flanged hex bolt on the top of the patch cover to the strut tower OEM ecu bracket mount. Tighten all mounting hardware to listed torque spec, a 1/4" drive - 6mm Allen socket with 6" Extension is a great tool to have here for the lower mounting hardware.



Step 8: Connect the harness to Haltech ECU. Confirm harness routing as shown, securing as needed with zip ties.

Engine Bay Mounted Elite 1500 Kit:



Step 9: Install intake assembly and connect battery. ECU Installation is now complete. If you have a new basemap provided, you can plug into the USB port and flash as needed. ECU setup calibrations need to be performed at this time, once complete first start may take place.

If you purchased additional sensors for better tuning strategies, safeties, etc installation of these may take place at any time, however we prefer them to be installed before the initial ecu setup calibrations are performed. Refer to the installation guides on the back of your pinout sheet provided with the ECU kit for these if purchased from Kozmic Motorsports. These are also listed on the downloads section of our website.

Sample AUX Harness and Pinout Sheet:



Questions? Contact us via email for technical assistance.

Sales@KozmicMotorsports.com

Need a base map? Ready to get tuned? Let us know!